



# Communication Solutions for **Local Government**

Get reliable, interoperable voice and data communications to improve community outcomes, worker safety, disaster preparedness and operational efficiency.



Your specialist Value-Added Distributor of Critical Communications Solutions



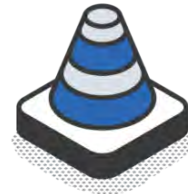
An aerial photograph of a residential neighborhood where a significant portion of the area is flooded. The water is dark and murky, covering streets and yards. Several houses with various roof colors (grey, brown, blue) are visible, some partially submerged. A white boat is moving through the floodwaters in the center, leaving a white wake. Power lines and poles are visible across the scene. The overall tone is somber and urgent.

# Reliable, interoperable communications.

With budget pressures and high expectations of community safety and disaster readiness, robust and interoperable communications are critical.

# When disaster strikes, are your **communications ready?**

Local government faces diverse challenges, from managing tight budgets and aging infrastructure, to operational efficiency for business as usual and during emergencies. These pressures are intensified by the need for seamless connectivity under the best and worst conditions and improved team collaboration.



In the event of a disaster or public safety emergency, the inability to scale and communicate rapidly can delay decisions, hinder team efficiency and compromise community safety—especially with outdated or disparate systems. Investing in an advanced critical communication solution will help local government with resilient, high-speed connectivity, enabling faster decision-making and seamless coordination between teams for better community outcomes.

**Investing in a flexible critical communications solution ensures your communications are ready for anything life throws at it.**



**Partner with us for more than just **products**. We offer **solutions**.**

Leverage the power of Logic Wireless' 120+ experienced resellers across Australia and New Zealand. Together we can help you overcome your current communication challenges, and prepare you for future possibilities.

As your partner, we will bring unrivalled technical knowledge, problem-solving skills, and out-of-the-box thinking to your next project. Let us help you improve your organisational efficiency and worker safety with critical communication solutions, that are fit for local government.



# Understanding your key challenges.



## Disaster Preparedness

**Are you able to respond quickly in emergency situations?**

Reduce the risk to your staff and the community with a modern, reliable and resilient communications network that enables your teams to work swiftly and efficiently with emergency services.



## Team Interoperability

**Can you communicate easily between teams, in any location?**

Optimise day-to-day operations and coordinated emergency responses with reliable, secure and interoperable DMR voice and data communications, with multiple calling and messaging options to suit all groups and scenarios.



## Operational Efficiency

**Do you have visibility over your team in real time?**

Get a real-time flow of information between teams and assets to improve operations, team coordination and service delivery. Complement your LMR solution with dispatch software and location tracking and improve your operational visibility and decisions.



## Worker Safety

**Do you have advanced safety measures in place?**

Arm your team with tools that prioritise their safety, and ensure help is always only ever a push of a button away. LMR communication networks deliver resilient and reliable coverage, and can be complemented with terminals with worker safety features, body-worn cameras, dispatch solutions and more.



## Aging Infrastructure

**Will your future systems require GPS and data?**

Digital communications networks can easily manage capacity changes, offer clear voice and reliable data services, facilitate interoperability, improve time and cost efficiency—all with a simple migration path from analogue. Ensure your system is ready for the future and make a plan to move to digital.



## Seamless Connectivity

**Can you locate your people, fleet and assets in real-time?**

Reliable, 24/7 wide-area network coverage for local government is essential for the safety of workers and the community. Clear, continuous voice and data communications ensure effective coordination between control centres and field workers to improve service delivery, worker safety and emergency response.





# Efficient team coordination, in any situation.

## Need help finding the right solution for you?

From industry-leading products to professional services, we can design a solution fit for you.

**CONTACT OUR EXPERIENCED TEAM TODAY TO LEARN MORE**



# Network requirements for local government.

Ensure your communications network is scalable from business-as-usual operation to interoperable wide-area disaster response with multiple agencies.



## **Reliable, resilient network**

Digital voice and data networks must function equally well in times of no stress and in the event of power outages or during disasters.

Features like redundancy, priority access, and backup power ensures continuous communication at all times.

## **Wide-area multi-regional coverage**

For greater flexibility, scalability and interoperability, work with neighbouring councils to create one larger regional network.

## **Interoperability**

Local government need a network that can support the seamless communication between internal teams, emergency agencies, and levels of government.

DMR is an interoperable open standard technology that facilitates, multi-agency access, and real-time data sharing for enhanced coordination.

## **Secure communications**

Given the sensitivity of public safety communications, local government networks must have robust cybersecurity, encryption, and access controls to protect against threats and unauthorised access.



# Critical voice services

## PTT over LTE & radio

Expand your critical comms LMR coverage with Push-to-Talk (PTT) over LTE, allowing remote users *outside* the coverage of your LMR network, to still communicate with LMR users *inside* the coverage area.

While PTT is not a critical comms solution like LMR— and it is likely the local cellular service will be unavailable if a disaster occurs— staff, or organisations working remotely, can still use the LMR-to-PTT gateway connection to communicate.

## Voice recording for training & emergencies

Enable operators and single contractors to record (and store) all voice communications throughout the day; these can be used for training or as an audit tool in the case of an emergency event.

All recorded voice is time and date stamped, and can also identify the radio user and current location during an emergency.

## Group & individual calling

Enjoy complete call privacy when needed, for all calling types across a digital network:

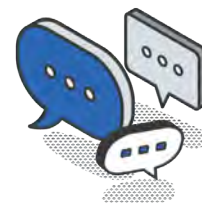
- + **Individual:** one-to-one between radios
- + **Group:** nominate specific users to belong to a specific group
- + **Broadcast:** call across all groups within the network

Privacy remains when calling between different contractors, and calling to landlines and cellular mobiles.

## Emergency calling options

Set your emergency calls to either call a dedicated radio or dedicated group of radios. When the emergency call is activated, the radios receiving the emergency call are sent both a visual and audible notification of the event.

If a worker in distress is unable to push the PTT on the side of the radio, once the emergency call is set up, the receiving radios can still hear the worker in distress and talk back to them— this is achieved by the radio automatically cycling between transmit and receive.



## Do you have a comms plan?

When *business-as-usual* suddenly becomes *critical*, how will you cope?

DISCOVER HOW WE CAN HELP YOU BETTER PROTECT YOUR WORKFORCE & COMMUNITY



## Worker safety & security features

Digital communications offer many features to assist with the safety and security of your teams working in a different departments and/or locations.

Encrypted communications, emergency duress alerts, real-time GPS tracking, and priority access are vital in a digital communications network to protect local government personnel and ensure rapid response in critical situations.

### Land Mobile Radio & Push-to-Talk over Cellular

Access a portfolio of industry-leading Land Mobile Radio (LMR) and Push-to-Talk over Cellular (PTToC) solutions:

- + Tough digital LMR radios built to handle any environment
- + Man Down and Lone Worker
- + Geofencing
- + Emergency Duress and alert capabilities
- + Communication-enabled hearing protection
- + Rugged PTToC devices for hybrid fleets
- + Extensive accessories portfolio

### Software applications

Intelligent software applications designed to streamline operations and enhance decision-making in critical situations:

- + Advanced dispatching systems
- + Radio management platform
- + Location services platform
- + GPS asset tracking

### Video & security

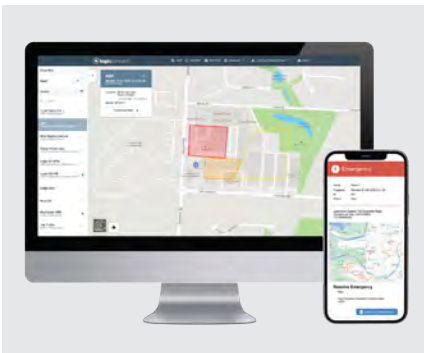
- + Body-worn cameras (BWC) capture evidence-grade video footage and proactively de-escalate potentially dangerous situations
- + Communication recorders







## Featured local government solutions



### Logic Connect

Cloud-based location services platform that supports the use of LMR, Android devices, and in-vehicle cellular devices.



### Motorola Solutions VB400 Body Worn Cameras

Powerful and secure mobile video for front line staff safety and security. Rugged and wearable to capture evidence-grade footage.



### Tait TP9900 Multiprotocol Multiband Portable

Multiprotocol, multiband portable able to switch between P25 and DMR networks just by changing the channel.



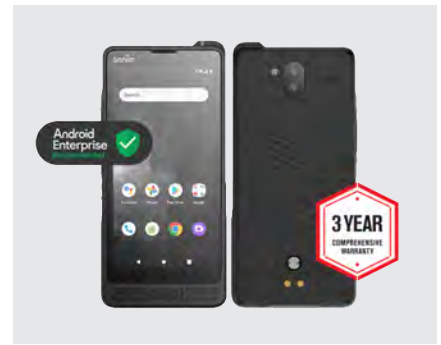
### Tait TP9700 DMR Multiband Portables

A portable radio that can be configured to operate seamlessly across multiple frequency bands including, VHF (136-174MHz), and UHF (378-520MHz).



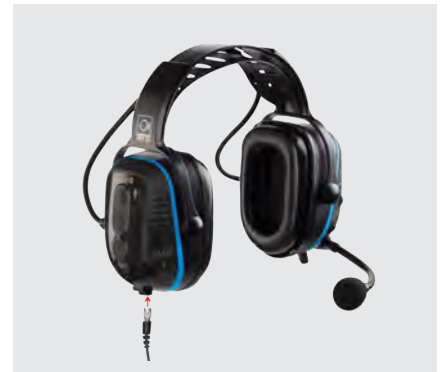
### Tait TB9400 Multi-Mode Base Station

A spectrally-efficient solution, enabling a migration path between modes, with greater capacity and thus future-proof your investment.



### Sonim XP10 5G Smartphone

Ultra-rugged smartphone, tested and validated to meet MIL-STD 810H and IPX9K rated, with a comprehensive 3-year warranty.



### Sensear Smart Headsets

Over-the-ear communication-enabled hearing protection in three wearing styles, for use in high-noise environments.



### Eventide NexLog EXP-Series Recorders

Specialised fixed and mobile record and replay solutions for up to 8 audio inputs.





# Your network, your solution, your way.

PREPARE TO STOP

You know your business  
best, as we know ours.

Our goal is provide you  
with the tools to meet your  
goals more easily.



# Finance and network options to suit your needs.

Leasing communications equipment allows local government to access the latest technology without the upfront costs, ensuring flexibility and scalability as your needs evolve. Choose to either create your own dedicated network for greater control or leverage an existing network to streamline setup and reduce operational complexity.



## Commlease

### Your Critical Communications Leasing Partner

Through the Logic Wireless network of experienced resellers, you can access local support, services and advice wherever you are in Australia, New Zealand and the Pacific Islands. Select from a wide range of critical communication products including portable hand-held radios, mobile devices, base stations, repeaters, antennae and more. Add extended warranties, full maintenance and equipment hardware insurance cover, and give yourself peace of mind that any issues will be sorted at no cost to you during the term of the lease.

Include the initial installation, programming and labour costs in the lease, and select terms from 12 to 60 months at competitive rates. Lease and lease-to-own options are available.

[www.commlease.com.au](http://www.commlease.com.au)



## Network options

### Choosing the right network for your operations

Create your own private network for greater control, security, and customisation, or leverage an existing network for quicker deployment, cost efficiency, and reduced maintenance responsibilities.

### Unsure which path forward to take?

**Leverage the expertise in the Logic Wireless dealer network to find the right solution fit for you.**





Visit our website to learn more:

[www.logicwireless.com.au](http://www.logicwireless.com.au) | [www.logicwireless.co.nz](http://www.logicwireless.co.nz)

