

siyata<sup>mobile</sup>



**CP250**

**Eyes on the road  
hands on the wheel**

**+** **logic**wireless™

---

# Next Generation Fleet Communication

The Siyata CP250 vehicle communicator is an all-in-one fleet communications device for LTE data, cellular voice calls, push to talk over cellular, navigation, data applications, built in dash camera and more.

The device is installed on the dash or windscreen and is tailored specifically for commercial vehicles such taxis, vans and delivery trucks.

---

The Siyata CP250 all-in-one design allows professional drivers to combine all vital communications and worker safety equipment into one device.

- Large 5" display to clearly show what the driver needs to see
- Dedicated Microphone & Speaker for loud & crystal clear sound
- Hands-free dialing, to keep eyes on the road and hands on the wheel
- Built-in dash camera with impact detection to record and store incidents
- Push-To-Talk (PTT) enabling group communication with the simple press of a button
- In-car Wi-Fi mobile hotspot
- Supports Fleet Management, GPS Fleet tracking AVL and dispatch systems
- Built in GPS Navigation
- Extreme temperature tolerance
- Android applications to customise the device as needed



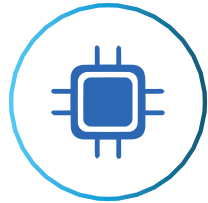
# PRODUCT FEATURES



First 4G Tablet style vehicle device.



Large 5" wide display screen.



MTK Chipset, MT6735, 4 CORE, 1.3GHZ.



ANDROID 6.0 Operating System. Enjoy all the Play Store applications.



Push-to-Talk over cellular (PoC) compatible, including fist microphone accessory.



In-vehicle high speed WiFi hot spot.



In-vehicle installation ensures that the CP250 is always powered by the vehicles battery.



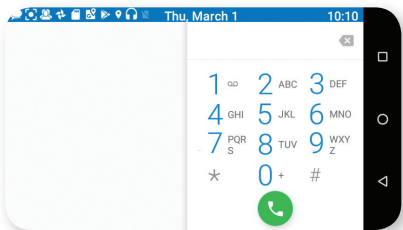
GPS Navigation for tracking functionality.



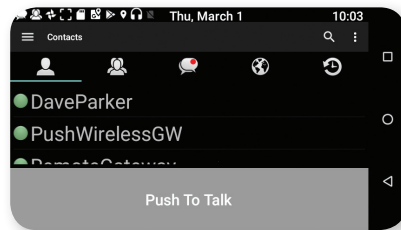
Built-in dash camera to record what the driver sees through the windscreen.



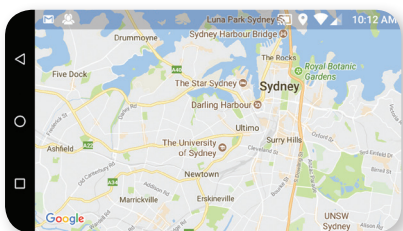
Cellular voice call and hands-free dialing functionality.



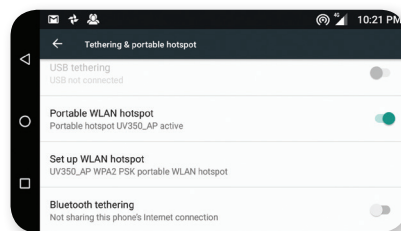
FULL CELLULAR HANDS FREE CALLING



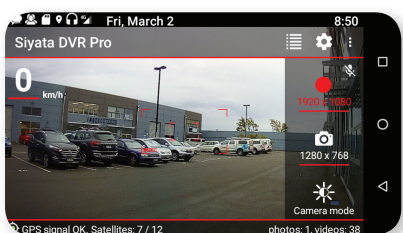
PTT OVER CELLULAR



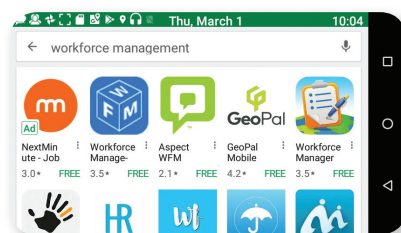
IN-VEHICLE NAVIGATION



WIFI HOTSPOT



DASHCAM PLUS ABILITY TO CONNECT EXTRA CAMERA



LOAD WORK FORCE MANAGEMENT APPLICATIONS

# SPECIFICATIONS:

<b>Description</b>		5" Android Car mini Tablet and DVR
<b>Dimensions</b>	Size	137 x 80 x 45 mm
<b>Platform</b>		ChipsetMT6735, 4 Core, 1.3GHz
	GPU	Adreno 308 500MHz
<b>Operating System</b>		Android 6
<b>RAM</b>		2GB
<b>EMMC</b>		16GB
<b>LCD</b>		5" LED 480 x 854
<b>TP</b>		5 points capacitive
<b>Supported Bands</b>	4G	FDD (1, 2, 3, 5, 7, 8, 20) 2100, 1900, 1800, 850, 2600, 900, 800
	3G	WCDMA 850, 900, 1900, 2100
	2G	GSM/GPRS/EDGE - 850, 900, 1800, 1900
<b>WiFi</b>	Standard	802.11 b/g/n, 2.4GHz
<b>Bluetooth</b>	Standard	Bluetooth 4.0
<b>GPS</b>		Supported
<b>Audio</b>	Microphone	External Microphone
	Speaker	Internal 2W External 12W
<b>Camera</b>	DVR	720P GC1014, Wide Camera, Adjustable
<b>Interface</b>	USB	USB 2.0 (High Speed) OTG
	Headset	3.5mm
	RS232	Support
	SIM	Micro SIM
	MicroSD	up to 32GB
	Power	12V 1A
<b>Environmental Temperature</b>		-30° to 70° C